

HD-CR-35

HIGH RESOLUTION IMAGE PLATE SCANNER

COMPACT HIGH-SPEED SCANNER FOR ALL FLEXIBLE TYPES OF IMAGE PLATES / STORAGE PHOSPHOR SCREENS UP TO 35X50CM

- EASY TO USE
- FOCUSABLE LASER RESOLUTION
- HIGH SCANNING SPEED
- INTEGRATED ERASING UNIT
- WHOLE-BODY RADIO-LUMINOGRAPHY



HD-CR-35 is a compact, high-speed scanner for all flexible types of image plates / storage phosphor screens up to the size of 35x50cm. In combination with the corresponding image plate, it can be used for a variety of different nuclides, such as ^3H , ^{11}C , ^{14}C , ^{18}F , ^{32}P , ^{33}P , ^{35}S , ^{59}Fe , ^{68}Ga , $^{99\text{m}}\text{Tc}$, ^{111}In , ^{125}I , ^{131}I , ^{137}Cs etc.

Its novel design allows compact size and high speed scanning. The laser is focusable up to 12.5µm, allowing pixel sizes from 12.5 to 100 µm without pixel interpolation. An integrated erasing unit allows to read and erase the imaging plate in one step. The HD-CR-35 scanner is the first imaging system for radio-luminography certified by BAM, Berlin, for the tests according to DIN EN 14784, class B.

Additional features are:

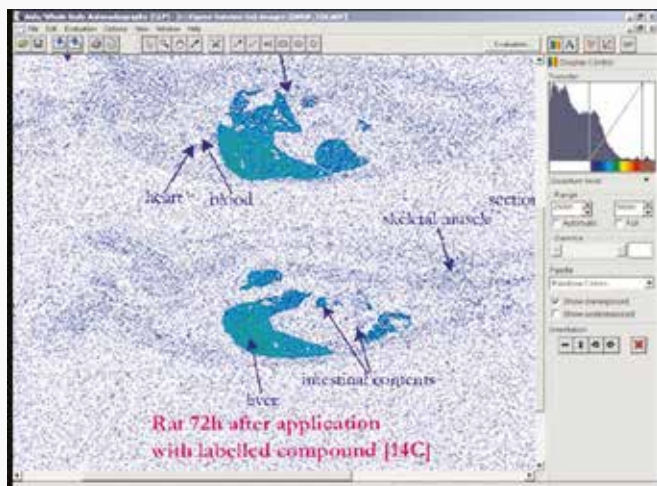
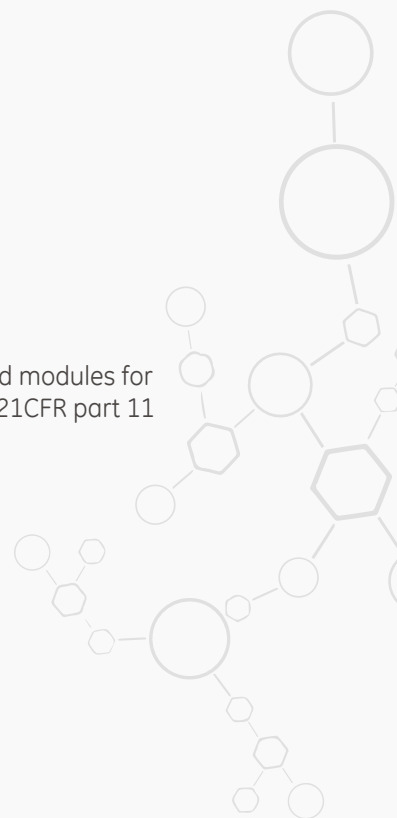
- Easy to use
- 16-bit dynamic range
- Focusable laser 12.5 – 25 – 50 µm resolution

Technical specifications

Laser:	red LED laser 635 nm with variable focus 12.5 – 25 – 50 µm
Pixel size:	12.5 – 25 – 50 - 100 µm
Max. size for screens:	W35cm x L43 cm or longer
Interface:	LAN cable
Operating noise:	<49 db (A)
Optional eraser:	for high-throughput and / or highly radioactive samples
Data analysis:	AIDA (network and standalone); state of the art data analysis; optimized modules for TLC analysis, gels and blots; whole body autoradiography; GLP / GMP, 21CFR part 11

Physical specifications

Dimensions	W390xD380xH520mm (W15,35”xD14,96”xH20,47”)
Weight	max. 21 kg (46,29 lbs)



Quantitative whole body radio-luminography